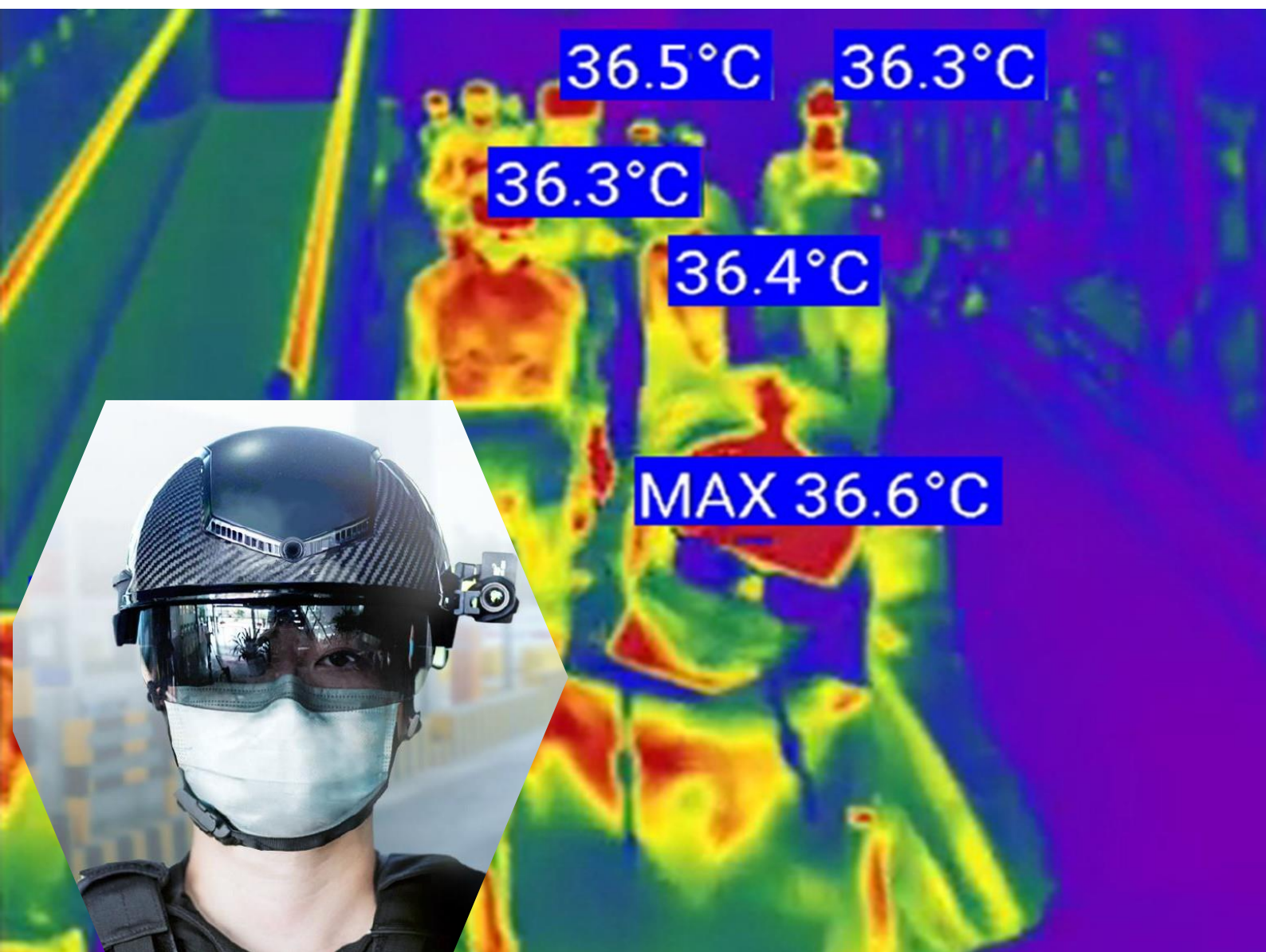


BRIDEX

FE Fuji Electric
Innovating Energy Technology

SmartHelmet++

Created with Decades of Ingenuity
First Choice for Epidemic Prevention



Advanced Materials and Technologies ▪ High-precision Temperature Measurement
Unaware and Contactless Screening of Fever ▪ Hi-tech Ultimate Experience



POWERFUL FUNCTIONS

Powerful Helmet for Verification

Rapid face recognition and
identity verification



Smart Helmet with Thermal Imaging

Make the invisible visible

POWERFUL FUNCTIONS

Efficient Helmet for Temperature Recording

Record personal info with
their daily body temperature
automatically



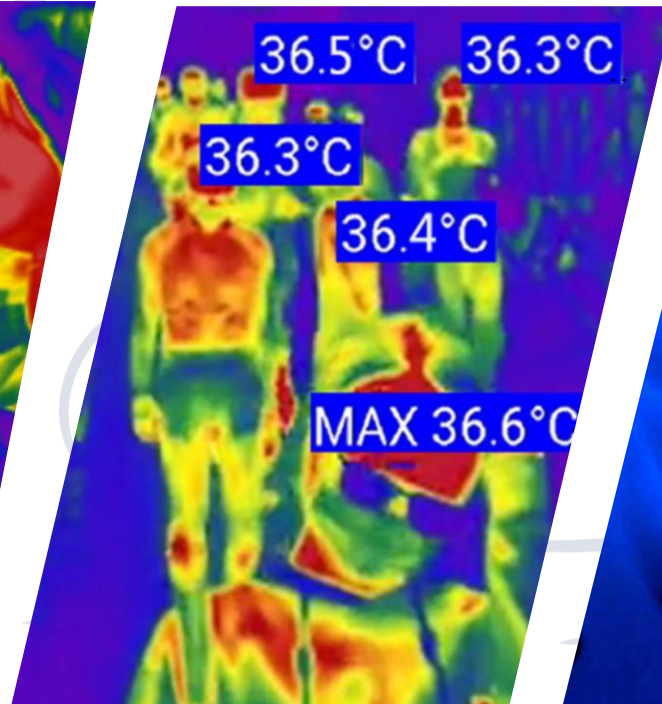
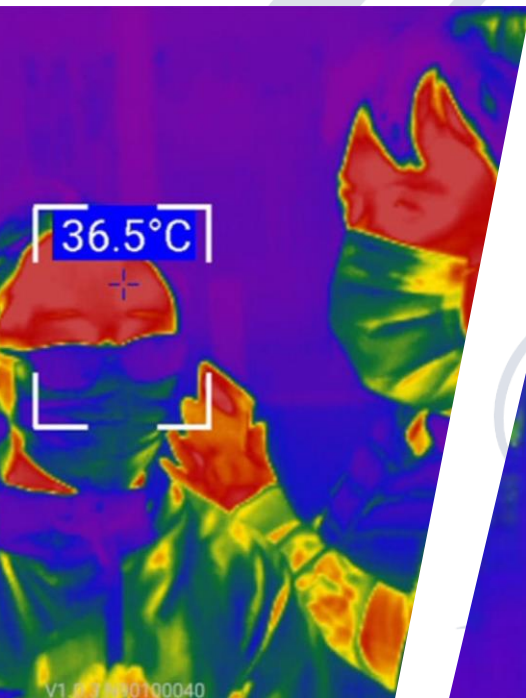
Unaware and Contactless Temperature Measurement

Rapid screening for both
indoor and outdoor

SEVEN MODES

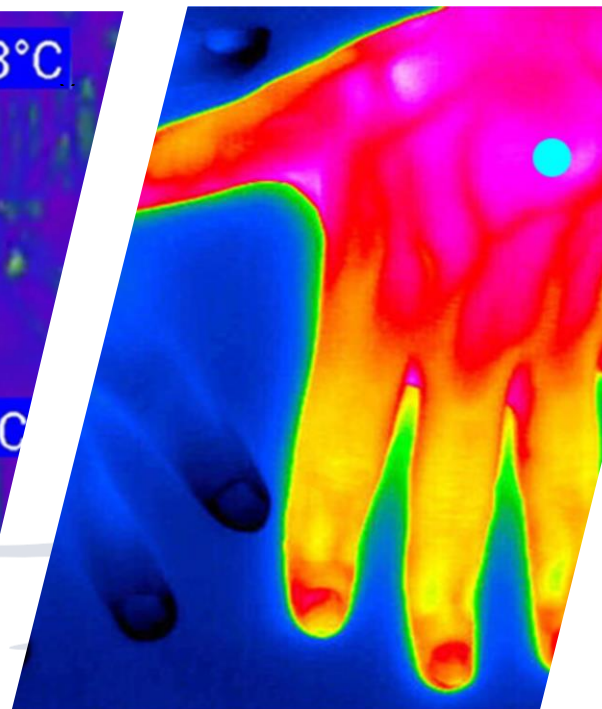
Single-person temperature measurement mode

The temperature of the single target in the center of the screen will be measured. The maximum temperature of different parts of the body is displayed on the AR module. The temperature above the normal range will trigger an audible and visual alarm.



Thermographic diagnostic Imaging mode

Thermal imaging detection on specific parts of the human body to assist finding the location and size of the lesion areas that cause fever.



Large-crowd temperature measurement mode

The temperature of the forehead, collar, arm, and other body parts exposed in the screen will be measured. The system will display the temperature if any part in the screen falls into the preset temperature range. The alarm will trigger when any part of the temperature goes above the threshold value.

SEVEN MODES



QR code mode

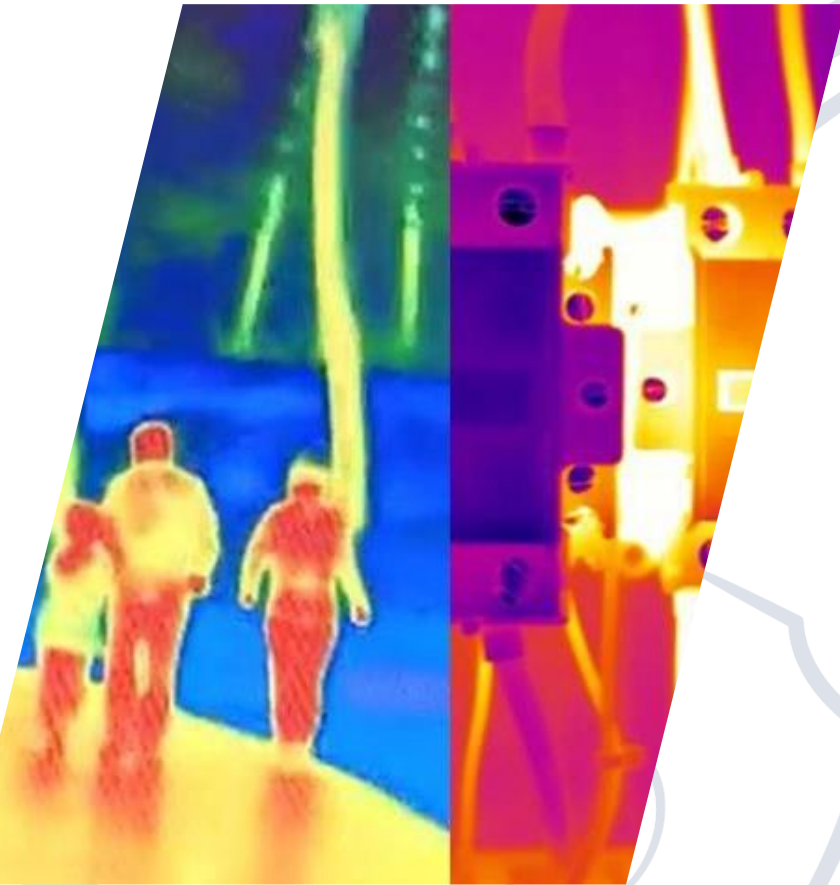
Scan the QR code to automatically record personal info into the database in real time, allowing paperless data logging.

QR code & temperature measurement mode

Scan the QR code to acquire the personal information first, and take a temperature measurement of the person within 3s. The personal information and the corresponding temperature will be automatically recorded into database. This will implement paperless registration of the personal information and the corresponding temperature.



SEVEN MODES



Night-vision / Facility inspection mode

Thermal imaging scanning of industrial facilities or establishments of night places, HVAC equipment, pipelines and electronic equipment, to assist finding target with abnormal temperature or searching for unauthorized person.

Face recognition mode

The face of target in the screen is recognized and the personal information will be displayed on the AR display. This mode is applicable for enterprises and institutions to manage their black and white lists of employees and visitors.



APPLICATIONS



Hospital

Early detection of the fever patients with the quick unaware and contactless temperature measurement and paperless registration to avoid the viral cross-transmission between healthcare professional and potential fever patients.



Office Buildings

Quick unaware and contactless temperature measurement and paperless registration to distinguish potential patients from other employees in a very short of time.

APPLICATIONS



Checkpoints

With the build-in unaware and contactless thermometer, checkpoints for screening patients can be speed up dramatically.



Central Business District

Quick unaware and contactless temperature measurement and paperless registration to distinguish potential patients from other customers in a very short of time.



FEATURES

Helmet Body

Advance stab-proof material with energy-absorbing design and ultimate weight reduction.

Helmet Shell Weight

115g (0.25 lb)

Total Weight

1080g (2.38 lbs)

Steel Cone

3kg (6.6lbs)

Free Failing

1m (39.3inch)

Impact without damage



FEATURES

Helmet Goggles

Same manufacturing process as helmet goggles for pilots.

Advanced photochromic material with multiple protection.

All-time capability with lighting conditions self-adaption.

Prevent high-speed impact of 6mm (0.236 inch) steel ball at 200 m/s (656.2 ft./s) without rupture or penetration



High-Speed Impact



Air-borne Droplets



Water Mist



Fingerprint



Scratch

200m/s

FEATURES

as watching **74-inch** TV from
3m (118.1 inch) away
field of view: 35°

FEATURES

Infrared Thermal Imaging

High-accuracy quick unaware and contactless temperature measurement

Accuracy $\pm 0.3^{\circ}\text{C}$

Resolution
384 x 288

Efficiency

200 people / min



Range

-20°C (-4°F) to 120°C (248°F)

FEATURES

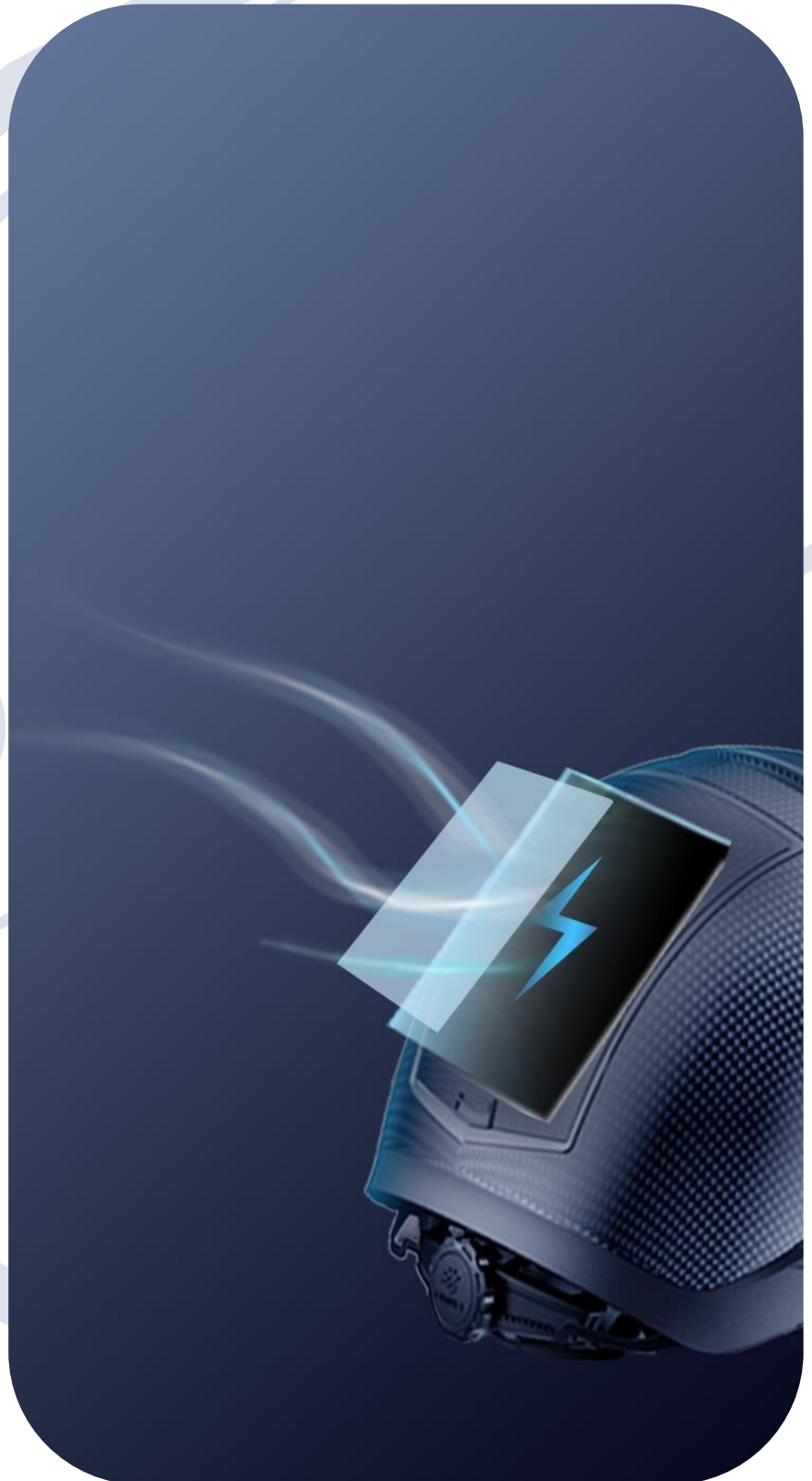
Battery Capacity

No less than **5000 mAh**

Standby time **24 h**

Temperature⁽¹⁾ measurement mode **5h**

⁽¹⁾ In most cases, we can turn off the AR screen with one key to reduce power consumption when there is no target for temperature measurement, and the battery life can reach 8 hours. In the continuous temperature measurement mode, the battery life is about 5 hours.



FEATURES

Smart Watch

Sporty and Stylish

Free Hands Completely

Configuration and control of Smart Helmet without Mobile Phone

Watch
connected



Communication

Advance material technology with strong signal, low power consumption and ultra-low radiation

Conformal antenna **8-in-1**

Specific Absorption Rate SAR < **0.05W/kg**
(0.023 W/lb)

Only **1/20** of mobile phone radiation



FEATURES

AI Capabilities

Support offline face recognition and license plate recognition

Support QR code identification for paperless registration



Design of Gravity Center Balancing

Refer to the balance design of aircraft gravity center

Avoid the formation of cantilever structure in working state, so as to protect the neck to the greatest extent and improve wearing comfort

The range of the gravity center c.g.diagram
< 5mm (0.197 inch)



ERGONOMICS



Modified Lycra fabric

High ability to mold to the head

Super stretch and shape retention for extra flexibility

All-day comfort and lasting fit



Advanced nylon laces **with high strength**



High-grade soft and durable lamb suede



Safety magnetic suction buckle can be opened quickly and effortlessly with just **one hand**

PRODUCT SPECIFICATIONS

Basic Information

Processor	ARM Cortex A53 Octa-core 2.5GHz
Operating System	Android 8.1
RAM	DDR 4GB
Memory	eMMC 64GB
Weight	1080±10g(2.38±0.022lb)

AR Display

Display	Array type optical waveguide display
Field of View	35°
Virtual Screen Size	Equivalent to watching 74-inch TV from 3m away
Rated Brightness	300nits

Infrared Thermal Imaging

Resolution	384×288
Response Band	8m~14μm
Image Frequency- frame	25Hz
Temperature Measurement Range	-20°C~120°C (-4°F~248°F)
Temperature Measurement Accuracy	±0.3°C within the specified range (2m by default)

Visible LightCamera

Maximum Pixels	13megapixels
Maximum Aperture	F2.0
Field of View	78°
Video Resolution	1080P@30fps



PRODUCT SPECIFICATIONS

Smart Watch

Processor	ARM Cortex A7 Quad-core 1.3GHz
Operating System	Android 7.1
RAM	DDR 1GB
Memory	eMMC 16GB
Display	Corning Gorilla Glass4
Resolution	400 X 400

Data Communication

Wi-Fi	IEEE 802.11b/g/n, 2.4GHz
Bluetooth	BT42, backward compatible with 3.0, 2.1, supporting BLE

Battery

Capacity	5000mAh
Voltage	DC3.7~4.2V
Charging Voltage	DC5.0V \pm 5%
Quick Charge	Supporting 2A fast charging

Protective Performance

Absorbing Collision Energy	RF electromagnetic field radiated susceptibility
Penetration Resistance	Complying with the requirements of penetration resistance test in GA 296-2001
Specific Absorption Rate	SAR<0.05W/kg(0.023W/lb)
ESD Anti-interference	Complying with the requirements of ESD anti-interference in GB/T 17626.2-2006
RF Electromagnetic Field Radiated Susceptibility	Complying with the requirements of ESD anti-interference in GB/T 17626.2-2006

Find out MORE!**FUJI BRIDEX PTE LTD****No. 15 Senoko Way, Singapore 758036****+65 6756 0833****sales@bridex.fujielectric.com****www.bridex.fujielectric.com**