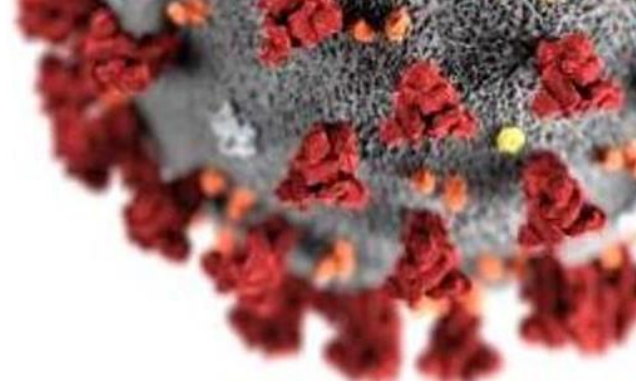


BRIDEX

FE Fuji Electric
Innovating Energy Technology



Rokid Glass T2++

TEMPERATURE MONITORING GLASSES



- ✓ MULTI-DETECTION UP TO 1000 PEOPLE/MINUTE
- ✓ LIGHT WEIGHT
- ✓ STEREO SPEAKER
- ✓ LONG BATTERY LIFE
- ✓ VIDEO RECORDING



AI
CAPABILITIES



HIGHLY
ACCURATE &
EFFICIENT



INFRARED
SCANNING



ERGONOMIC
DESIGN



PC
COMPATIBILITY



CONTACTLESS
TEMPERATURE
DETECTION



LOW POWER
CONSUMPTION



Multi person temperature measurement adopts AI facial recognition and multi-point average fitting temperature measurement technology. With the infrared sensor, Rokid Glass T2++ can detect the temperatures of nearly 1000 people within 1 minute from 2 meters,

Rokid GLASS T2++

TEMPERATURE MONITORING GLASSES

while measuring 10 people simultaneously. The detections are contactless, accurate and are useable in different high-risk scenarios such as airports, schools, parks, workplaces and etc.

Features

- ★ **High Accuracy & Efficient.** 110,592 infrared pixels and deviation – rectifying AI algorithm provides greater accuracy. Able to multi-detect 10 people per sec and up to 1000 people within 1 minute.
- ★ **Detachable Lens.** Outer cover and inner corrective lens are configurable for different work requirements. **Foldable Feature**, easy to fold, carried up to 20,000 folding tests.
- ★ **Light Weight.** Weighing only 105g and dock weighs 273g. Well-balanced design and comfortable to wear for an extended period of time. Device has a total weight of <30g which empowers smoother operations and promotes higher functionality.
- ★ **Ergonomic Design.** Purpose-built with aviation-grade magnesium-aluminium alloy material lined with EVA to fit and wear comfortably.
- ★ **Longer Battery Life.** Low power design, lasts up to 8 hours with 10,000Amh quick charge 2.0 supported battery.
- ★ **Strong Extend Capacity.** Device can be configured with a wide range of technology capabilities. Compatibility with PC, MAC, mobile devices with DP output.
- ★ **Optics.** 40° Field of view, monocular display, waveguide optics technology enables better see-through and improved contrast ratio. Suitable to use in large crowd areas.
- ★ **Powerful Sensor & Contactless Temperature Detection.** 8MP COMS image sensor, 9-axis gyro, light sensor and proximity sensor. Enable to detect from 2 meters away. This heavily reduces the risk of disease transmission through close physical contact.
- ★ **QR Code Scanning** is the universal key to connect the real world and the virtual world.
- ★ **Audio.** Comprise of 2 microphones, stereo speaker and active noise cancellation. Enable license plate recognition, message notification, video recording and video call. Able to communicate remotely with the command centre in real time location.

Scope of Application:



MEDIA REPORTS

UPDATED JUNE 2020

EUROPE

Mirror

Smart glasses let you 'see' peoples' temperatures to help avoid catching coronavirus

In response to the COVID-19 outbreak in late 2019, Hangzhou-based startup Rokid developed a pair of glasses to help screen for symptoms.



REUTERS



Temperature 'seen' through a pair of glasses

Posted May 1, 2020

A newly developed pair of high-tech glasses can "see" people's temperature up to three meters away, Chinese start-up Rokid says its engineers created them within two weeks - a device they call T1. Ryan Brooks reports.

franceinfo

Chine : des lunettes thermiques pour traquer le coronavirus



RUPTLY



Hangzhou park security uses smart glasses to read visitors' temperature

China, Hangzhou

Science and Tech - COVID-19

April 03, 2020 at 19:58 GMT +08:00 - Published

Xie Wetland Hongyuan Park in Hangzhou has equipped their security staff with AI-powered smart glasses that enable them to check visitors' body temperature from a safe distance, footage shot on Thursday shows.

"They can detect body temperature with infrared technology. It can detect the human's body temperature from one to three meters away. It can detect the temperature of a person within 0.5 seconds," explained Xiang Wenjie, the Vice President of Rokid Corp, who is behind this project.

The glasses thus allow security personnel to carry out body temperature checks at a safer distance and at a faster rate than traditional testing methods.

"When it is abnormal, it shows a warning and rings an alarm. The people wearing it will notice the temperature of the person in front of them."

Sign Up to get full script access

USA

TechCrunch

Chinese startup Rokid pitches COVID-19 detection glasses in US

Jake Bright, Rita Liao / 3:05 pm CST • April 16, 2020

Comment



ASIA



Dubai Police tests sunglasses developed to spot people with coronavirus symptom

Thu 07, May 2020

Share



yahoo! news

Hangzhou park security uses AI-powered smart glasses to detect people with fever

Sun 07 May 2020 12:00 PM



In China, Hangzhou and Hui, there is almost no falling from Supermarket because of the powerful 5G signal. The camera recognizes the ability to see through walls.

Today, 82 years after the agreement first appeared in Action Camera 11 on April 10th, the first independent action film and video in China, an AI-powered 5G camera (AI) technology is being used to help stop the coronavirus from spreading.

Hangzhou security staff at Hangzhou Park, part of the New Wetland park in Hangzhou in eastern China, now have the power to quickly detect the body temperature of all park visitors from a distance of up to 10 meters. Thanks to "thermal infrared image" - smart glasses supplied by the company, Rokid Corp.

The company said on Thursday that each smart glasses can be capable of detecting the temperature of several hundred people within two minutes - a vast coverage and speed that would make use of Supermarket - to identify cases of the park visitors.

It said the smart glasses are being deployed this week in 2020. "Reduce the possibility of large numbers of people gathering" and efforts to reduce social distancing, especially in hot areas that have been the hardest hit by the virus after a nearly two-month lockdown because of the coronavirus crisis.



Each smart glasses can detect the body temperature of all park visitors from a distance of up to 10 meters. Thanks to "thermal infrared image" - smart glasses supplied by the company, Rokid Corp.

The COVID-19 outbreak on the mainland has led to a surge in the use of AI applications to help control the spread of the disease. Some of the viral applications are those that enable owners opening disinfected at targeted events and apps that can track people's history to AI-powered systems using people to give advice on home quarantine.

Tech companies including Rokid and Hikvision said their AI technologies are being used at numerous checkpoints.

USED IN 33 COUNTRIES & REGIONS



Shanghai Customs | China



Subway | Singapore



Xixi National Wetland Park | China



Public Security | Chile



GreenTown Property | China



Aeropuertos Argentina 2000 | Argentina



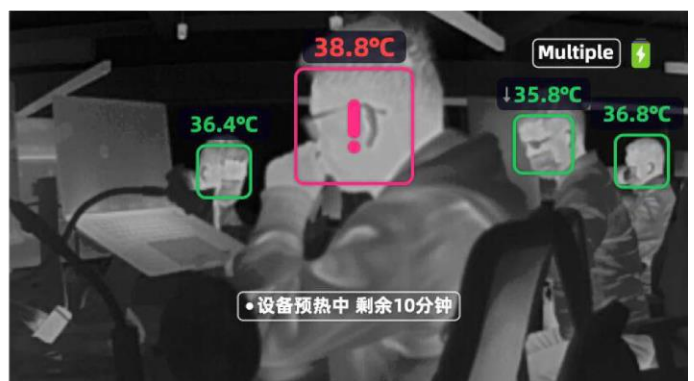
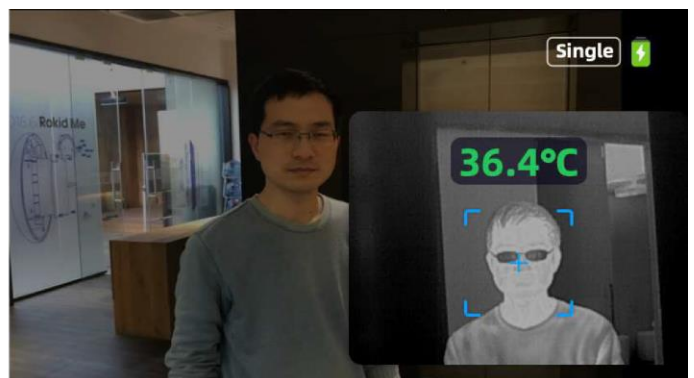
Jiangxi Middle School | China



Police | Italy

Infrared Thermometry Module Specifications:

Model	Rokid Glass T2
	FB-Glass++01
IR Sensor Type	Uncooled Infrared Focal Plane
Resolution	384*288
Frame Rate	25Hz
FOV & Focal Length	28.4° *21.4° and 13mm
Temperature Sensitivity	≤0.04°C
Power Consumption	<300mW
Measuring Temperature Range	30°C~45°C
Operating Environment Temperature Range	10°C~40°C
Accuracy	±0.3°C within 2 meters(~6.6feet), ±0.4°C at 4 meters(~13.2feet)
Weight	<30g



Find out MORE!

FUJI BRIDEX PTE LTD

No. 15 Senoko Way, Singapore 758036

+65 6756 0833

sales@bridex.fujielectric.com

www.bridex.fujielectric.com